

THE PALM BEACH SHOW

JEWELRY | ART | ANTIQUES | DESIGN

FOR IMMEDIATE RELEASE

PALM BEACH COUNTY CONVENTION CENTER | 650 Okeechobee Blvd., West Palm Beach, FL 33401

Media Contact: Kelsi Monteith | Executive Director of Communications | Kelsi@palmbeachshow.com | 561.822.5440

21st Annual Palm Beach Show Announces the Return of the Annual Lecture Series Schedule & Curated Show Programming

February 15-20, 2024 • Presidents' Day Weekend



Palm Beach, FL (February 7, 2024) – The Palm Beach Show is pleased to present a full line up of programming for the February 2024 fair. Patrons can expect a variety of curated programming throughout the run of show including the annual Lecture Series featuring interesting presentations from a wide range of experts in their fields. All lectures will be located in Room 1DE at the Palm Beach County Convention Center and free to the general public, as well as attendees of the show. Full schedule of events can be found below and [online](#).

The fair opens on Thursday, February 15th with a VIP Opening Night Preview from 5pm – 10pm and opens to the public for general admission from Friday, February 16th through Tuesday, February 20th from 11am to 6pm.

...

Friday, February 16, 2024



12pm Lecture: Sandra Diaz-Velasco R.A., Principal Architect, Eolo A&I Design, Inc

Designing with Old Masters and Contemporary Art"

Explore how an art collection, blending Old Masters with Contemporary Art, can convey emotions that transcend the boundaries of time. Create a distinguished home or office by facilitating a unique dialogue between Art, Architecture, and Interior Design.

PALM BEACH SHOW GROUP

THE PALM BEACH SHOW

JEWELRY | ART | ANTIQUES | DESIGN

FOR IMMEDIATE RELEASE

PALM BEACH COUNTY CONVENTION CENTER | 650 Okeechobee Blvd., West Palm Beach, FL 33401

Media Contact: Kelsi Monteith | Executive Director of Communications | Kelsi@palmbeachshow.com | 561.822.5440



12:30pm Booth Talk: Lior Kristal, Design Director
Booth#: 124

Design Journey with David Harber

For Millenia creative output has been inspired by not only patterns in nature but celestial bodies and the landscape. Our talk will explore this and look at the symbolism that often lies behind sculpture using the works of David Harber to illustrate these ideas.

We will talk about the main aspects to consider when incorporating artwork into a space such as location, prominence, and proportion as well as materials, surfaces, and textures in terms of functionality and aesthetics.

With the design journey at David Harber our desire is to create works that shape the environments they're in. Without dominating them. They aim to distort surroundings and our perception of them and create spaces that are different and arresting.



1pm Lecture: Barbara Chamberlain, Director, Art Services, Private Client Select Insurance Services, LLC

What Can You Do About An Unmanaged, Undermanaged, or Mismanaged Collection?

Whether you occasionally acquire artworks or collectibles or travel the globe to find just the right treasures, if you inherited a few items or have storage units full of something you can't stop collecting—you have a collection! It is important to you, and it has value, so it needs to be protected. Learn about the basics of collections management and care, and discover helpful do's & don'ts, tips, and resources you can use to extend the life of your collection.

PALM BEACH SHOW GROUP

THE PALM BEACH SHOW

JEWELRY | ART | ANTIQUES | DESIGN

FOR IMMEDIATE RELEASE

PALM BEACH COUNTY CONVENTION CENTER | 650 Okeechobee Blvd., West Palm Beach, FL 33401

Media Contact: Kelsi Monteith | Executive Director of Communications | Kelsi@palmbeachshow.com | 561.822.5440



2pm Lecture: Mahmood Qannati, Founder of Qannati Objet d'Art

The Art of Time-Keeping

Mahmood Qannati will discuss how humanity has been viewing "art" and its evolution to different aspects of craftsmanship such as "watchmaking and jewelry". He will present the argument that art has kind of lost its delicacy and fineness due to the industrial revolution. There is a movement to revive that.



3pm Lecture: Ruchi Kotahwala, Creative Director and CEO of Ruchi New York

Self-expression through Jewelry: Unveiling Identity and Personal Style with Natural Diamond and Gemstone Jewelry

For generations, jewelry has served as a beloved medium for self-expression, enabling us to spotlight our distinctive identities and personal styles. Discover the world of high jewelry and learn how some of the most powerful women influenced the jewelry world through their distinct styles.

Saturday, February 17, 2024

"Day of Design" at the Palm Beach Show Sponsored by

FLORIDA DESIGN

Presenting A Day Dedicated to Honoring Interior Designers & Decorators Featuring Curated Programming Including:

SPOTTED by Florida Design! Florida Design Magazine's Editor in Chief Luis Rigual, Editorial Director Daphne Nikolopoulos and Publisher Terry Duffy will shop the 21st Annual Palm Beach Show and choose their top highlighted items. The Style Spotter items will be chosen based on outstanding style and form

PALM BEACH SHOW GROUP

THE PALM BEACH SHOW

JEWELRY | ART | ANTIQUES | DESIGN

FOR IMMEDIATE RELEASE

PALM BEACH COUNTY CONVENTION CENTER | 650 Okeechobee Blvd., West Palm Beach, FL 33401

Media Contact: Kelsi Monteith | Executive Director of Communications | Kelsi@palmbeachshow.com | 561.822.5440

and will be announced on the VIP Opening Night and recognized throughout the show floor with honors.



Five of the exhibitor items chosen during the Style Spotting will host Booth Presentations on Saturday's Day of Design. Join us on February 17, 2024, every half hour between 12-3pm for a detailed presentation of the show's most sought-after items!

1pm Panel Discussion: *Investing at the Crossroads: Art, Real Estate, and Interior Design*

Featuring:

Ruben Gutierrez: CoFounder / Interior Designer_ Errez Design

Katie Gutierrez: Cofounder / Interior Designer_ Errez Design

Emre Basman: CEO Armina Casa

David Shultz: President_Beachfront Builders

Ivana Shultz: Real Estate Broker_Beachfront Properties

Deborah (Debi) Larrison: Managing Director / Senior Structured Credit Executive_Bank of America

Join us for a captivating panel discussion titled "Investing at the Crossroads: Art, Real Estate, and Interior Design." Esteemed experts from finance, art, real estate, and interior design will converge to explore the symbiotic relationship between these domains. Delving into the dynamics of how investments in art, design, and real estate intersect, the conversation will unveil the evolving trends and influences shaping these interconnected sectors. Don't miss this opportunity to gain a nuanced perspective on the financial, aesthetic, and social implications that arise when art, design, real estate, and interior design converge.

PALM BEACH SHOW GROUP

THE PALM BEACH SHOW

JEWELRY | ART | ANTIQUES | DESIGN

FOR IMMEDIATE RELEASE

PALM BEACH COUNTY CONVENTION CENTER | 650 Okeechobee Blvd., West Palm Beach, FL 33401

Media Contact: Kelsi Monteith | Executive Director of Communications | Kelsi@palmbeachshow.com | 561.822.5440

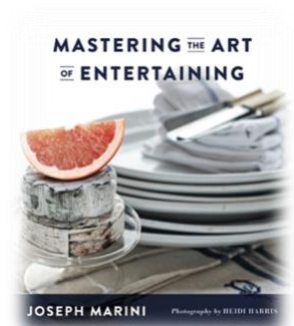


2pm Lecture & Book Signing: Joseph Marini

Mastering the Art of Entertaining with Joseph Marini

Join entertaining expert Joseph Marini when he sits down with Creative Director Suzanna Hamilton to find out his secrets and tips in creating beautiful tabletop settings that incorporate antiques, along with his fabulous cocktails, original menus, and beautiful that are easy, fast, and

floral arrangements sophisticated. As a longtime antique collector, florist, and caterer, Joseph makes entertaining enjoyable. Joseph will be passing out some of his favorite bites while discussing and signing his new book, *Mastering the Art of Entertaining*.



4pm Designer Panel Discussion

Moderated by: Jayne Chase, Founder of Perfectly Palm Beach & Design Editor of Quest

Featuring Designers:

Chris Goddard, Goddard Design Group
Jeremy Taylor, Taylor & Taylor Architecture & Interior Design
Helen Bergin, Helen Bergin Interiors

Celebrating Design and Architecture Today

PALM BEACH SHOW GROUP

THE PALM BEACH SHOW

JEWELRY | ART | ANTIQUES | DESIGN

FOR IMMEDIATE RELEASE

PALM BEACH COUNTY CONVENTION CENTER | 650 Okeechobee Blvd., West Palm Beach, FL 33401

Media Contact: Kelsi Monteith | Executive Director of Communications | Kelsi@palmbeachshow.com | 561.822.5440

Design and architecture experts Helen Bergin, Chris Goddard and Jeremy Taylor will discuss the legacy of collectibles, art, and antiques in today's world of contemporary design and architecture on a dynamic panel moderated by Jayne Chase Founder of Perfectly Palm Beach and Design Editor of Quest.



Sunday, February 18, 2024



12pm Lecture: Dr. Giuliana Castellani Koch, President of America for Culture

Florence and the Origins of the Renaissance

Florence is the birthplace of the Renaissance, bringing humanism to the world of art. In this presentation, Giuliana Koch examines the four building blocks of the Renaissance, Wealth, Civic Ambition, Religion and Humanism, which brought Florence and its rich history to the forefront of civilization.



1pm Lecture: Deborah C. Pollack, Award-winning author, and speaker

Hermann Herzog: Florida's Most Important Landscape Painter

Learn the truth about our most prolific and poetic artist, Hermann Herzog (1832-1932), who first came to Florida around 1893 and fell so much in love with its beauty that he returned practically every winter, painting over 300 oils of its virgin terrain until around 1912. Comparisons will be made with Winslow Homer, George Inness, and Martin Johnson Heade, who were in Florida at the same time.

PALM BEACH SHOW GROUP

THE PALM BEACH SHOW

JEWELRY | ART | ANTIQUES | DESIGN

FOR IMMEDIATE RELEASE

PALM BEACH COUNTY CONVENTION CENTER | 650 Okeechobee Blvd., West Palm Beach, FL 33401

Media Contact: Kelsi Monteith | Executive Director of Communications | Kelsi@palmbeachshow.com | 561.822.5440



2pm Lecture: Anna Paola Cibin, Artist

The Magic of Venice

The magic of the lagoon comes to life and blends with the magic of silk velvet and Murano glass. Colors that vibrate with light and evoke the atmosphere of Venice. The artist will narrate how the creation of her paintings on silk velvet unfolds and the story behind the 'Funny Birds' Secret Garden' installation.

3pm Lecture: Rabbi Carlie, Rabbi Ryan Daniels, Mark Cohen

Rabbi Carlie & Rabbi Ryan are Co-Senior Rabbis, Temple Israel of West Palm Beach

Art as Tikkun Olam, "Repairing the World"

Join Rabbis Carlie & Ryan Daniels (Temple Israel of West Palm Beach) and local artist, Mark Cohen, to explore more generally, how artists have commented on social justice issues throughout history and specifically, how Mark has navigated the world and current events through his art.



Monday, February 19, 2024



12pm Lecture: Katherine Van Dell, Co-Director & Director of Jewelry, The Boutique by Heritage Palm Beach

How To Be A Savvy Jewelry Buyer

"In the Loupe" understanding how to build your personal jewelry collection with a mindful eye for what is good. Learn the basic tenants of buying jewelry on the secondary market and get a tutorial on how to use a loupe.

PALM BEACH SHOW GROUP

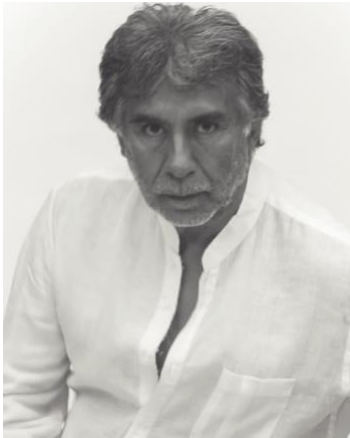
THE PALM BEACH SHOW

JEWELRY | ART | ANTIQUES | DESIGN

FOR IMMEDIATE RELEASE

PALM BEACH COUNTY CONVENTION CENTER | 650 Okeechobee Blvd., West Palm Beach, FL 33401

Media Contact: Kelsi Monteith | Executive Director of Communications | Kelsi@palmbeachshow.com | 561.822.5440



1pm Lecture: Carlos Herrera, Art New Line

Innovation in the Arte

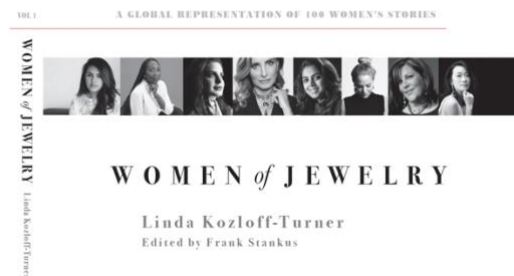
Innovation in the art and manufacture of wooden products, combining materials such as metal, exotic veneers, semi-precious stones, colors and finishes. Our proposal plays with volume, texture, a wide range of colors and lighting effects. We are a proposal of current modern art.



2pm Lecture & Book Signing: Linda M. Kozloff-Turner, Author and Designer

100 Women of Jewelry – What it Took to Write the Book

The story, the ideas and work behind the scenes interviewing 100 women in the jewelry industry. What did I see and learn? What were some of the common denominators, and what were some of the surprises? Questions welcome!



3pm Lecture: Ben Walker, Head of Modern Design at Bonhams US and Caroline Morrissey, Head of Jewelry at Bonhams US



The Enduring Power of Tiffany: Jewelry and Modern Design in the Secondary Market

In the world of luxury and design, few names evoke timeless beauty and unparalleled craftsmanship quite like Tiffany. Bonhams experts in Jewelry and Modern Design explore the market for Tiffany today and will discuss topics like the importance of provenance, what makes one piece more valuable than another, and the future of this ever-relevant market.

Presented by the Palm Beach Show Group, the Palm Beach Show will take place over Presidents'

PALM BEACH SHOW GROUP

THE PALM BEACH SHOW

JEWELRY | ART | ANTIQUES | DESIGN

FOR IMMEDIATE RELEASE

PALM BEACH COUNTY CONVENTION CENTER | 650 Okeechobee Blvd., West Palm Beach, FL 33401

Media Contact: Kelsi Monteith | Executive Director of Communications | Kelsi@palmbeachshow.com | 561.822.5440

Day Weekend, February 15-20, 2024 at the Palm Beach County Convention Center.

For additional information about the Palm Beach Show, please visit www.PalmBeachShow.com

XXX

About the 2024 Palm Beach Show:

SPONSORED BY:

Veuve Clicquot

Whispering Angel

PROVENCE

PALM BEACH
ILLUSTRATED

FLORIDA DESIGN

Bonhams

AUCTIONEERS SINCE 1793



GOLDEN GOAT

Opening Night Preview Party

Thursday, February 15, 2024 5pm-10pm

VIP Preview – 5pm Entry (Invitation or \$100 Multi-Day Ticket Per Person)

Collectors Preview – 7pm Entry (Invitation or \$50 Multi-Day Ticket Per Person)

General Show Days - (Invitation or \$30 Multi-Day General Admission Ticket Per Person)

Friday, February 16 11am – 6pm

Saturday, February 17 11am – 6pm

Sunday, February 18 11am – 6pm

Monday, February 19 11am – 6pm

Tuesday, February 20 11am – 6pm

WHERE: Palm Beach County Convention Center

650 Okeechobee Boulevard, West Palm Beach, FL 33401

ADMISSION: \$50 - \$100 for VIP Opening Night Ticket and \$30 for General Admission Ticket

All purchased tickets are valid for all General Show Days

FOR MORE INFORMATION: Please call 561.822.5440 or visit www.PalmBeachShow.com

LINKS: [Facebook](#) • [Instagram](#) • [Photo Gallery](#) • [Video Gallery](#)

PALM BEACH SHOW GROUP