

FOR IMMEDIATE RELEASE:

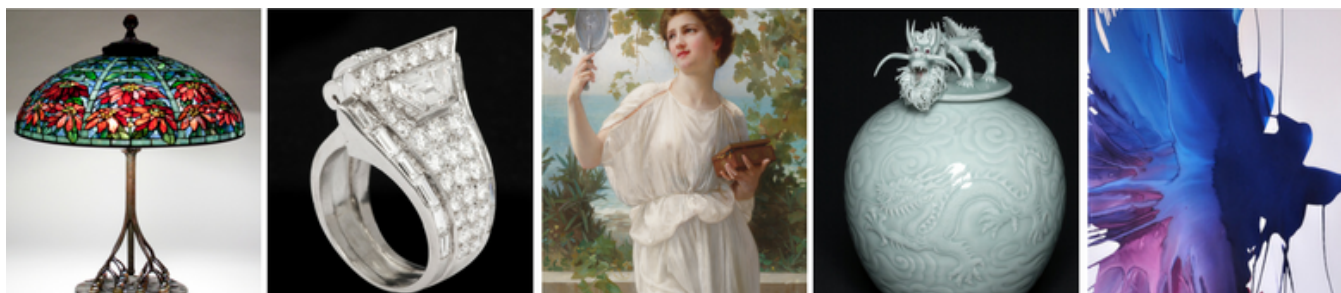
Media Contact:

Kelsi Hartmann
Director of Communications
Palm Beach Show Group
kelsi@palmbeachshow.com
561-822-5440

PALM BEACH

JEWELRY, ART & ANTIQUE SHOW

THE PALM BEACH JEWELRY, ART & ANTIQUE SHOW BRINGS LEADING INTERNATIONAL GALLERIES AND WORLD-CLASS TREASURES TO THE PALM BEACH COUNTY CONVENTION CENTER



(Palm Beach, FL) – The Palm Beach Jewelry, Art & Antique Show will make its annual return to the Palm Beach County Convention Center February 14-20, 2018, Presidents' Day Weekend. Presented by the Palm Beach Show Group, this important event will feature more than 170 international exhibitors and will feature an engaging lecture series.

The show has become a hallmark of the Palm Beach social season and has set a benchmark of excellence in the art, antique and jewelry industry. The show is known for bringing thousands of works of art and antiquities from domestic and international galleries, in addition to fabulous antique and estate jewels from many of the world's elite jewelers. The Palm Beach Show boasts an enviable selection of antiquities and upon its return, will draw tens of thousands of private collectors, museum curators, investors and interior designers who are eager to view and purchase some of the most unique and coveted treasures in the world.

The Palm Beach Jewelry, Art & Antique Show will kick off on Wednesday, February 14th with the 2nd Annual Exclusive Vernissage Reception from 4pm – 6pm followed by the VIP Opening Night Preview Party from 7pm – 10pm. The Palm Beach Jewelry, Art & Antique Show Opening Night Preview Party has consistently drawn attendees who love art, including museum curators, political dignitaries, collectors and the social elite. The invitation-only evening provides a first-look of the Palm Beach Jewelry, Art & Antique Show offerings before they are available to the public.

Items at the show will span every genre, juxtaposing many periods and movements. Visitors will have the opportunity to view and purchase fine art from across the broad spectrum of Old Master, German Expressionist, 18th and 19th century European, American Regionalist, Modern and Contemporary. They will also have the opportunity to view some of the world's finest collections of silver, glass, textiles, sculpture, porcelain, Asian art, furniture, antique and estate jewelry and more.

The 2018 show returns with an impressive list of leading international galleries, many of which will bring works never before seen in Palm Beach. Adding to the show's cultural experience, the Palm Beach Jewelry, Art & Antique Show will present its 15th Annual educational lecture series that is free and open to the public as well as show attendees. The lecture series will include presentations on a wide array of captivating topics by respected dealers and industry experts.

The Palm Beach Jewelry, Art & Antique Show continues to be the largest and most important show of its kind and remains a must-see for both the art connoisseur and the art-curious.

For more information, visit www.palmbeachshow.com or contact the Palm Beach Show Group's Director of Communications, Kelsi Hartmann, at kelsi@palmbeachshow.com or call 561.822.5440.

About the Palm Beach Jewelry, Art & Antique Show

Palm Beach Jewelry, Art & Antique Show Schedule and Ticketing

Opening Night Preview Party

Wednesday, February 14

Invitation Only Vernissage – 4pm – 6pm

Invitation Only Private Preview – 7pm – 10pm

General Admission:

Thursday, Feb. 15 – Tuesday, Feb. 20

\$20 –For an All-Days Access Ticket

Thursday, February 15, 11am – 7pm

Friday, February 16, 11am – 7pm

Saturday, Feb. 17, 11am – 7pm

Sunday, Feb. 18, 11 am – 7pm

Monday, Feb. 19, 11am – 7pm

Tuesday, Feb. 20, 11am – 6pm

For tickets and information visit www.palmbeachshow.com.